



# RodiCare® instant

Complete feed for dwarf rabbits, guinea pigs, degus, and chinchillas

With healthy herbs

A high content of crude fiber from alpine grass meal, soybean hulls, and oat bran supports the maintenance of gut flora and stimulates intestinal peristalsis.

Pectins and fructo-oligosaccharides (FOS) selectively promote beneficial gut flora in the cecum and colon (prebiotics).

Vitamins and minerals help prevent deficiencies caused by diet or illness.

Fenugreek seeds, calamus root, and turmeric stimulate appetite and digestive activity.

Chamomile flowers, peppermint, fennel, caraway, and licorice root enrich the diet with valuable secondary plant compounds.



## For temporary feeding of

- animals with poor appetite
- weakened animals
- before/after dental treatments
- during recovery (convalescence)

**RodiCare® instant is a high-quality, fiber-rich, and low-calcium powdered complete feed for dwarf rabbits, guinea pigs, chinchillas, and degus that are temporarily unable to eat solid food on their own.**

It can also serve as a feeding base for other inappetent small rodents, herbivorous reptiles, and birds, although supplementation based on the species' specific needs is required.

RodiCare® instant is also suitable as a rearing feed for orphaned young animals or as a supplementary feed for weak or stunted juveniles that are no longer exclusively dependent on milk.

It contains all essential vitamins and minerals. Its high vitamin C content ensures adequate supply even for guinea pigs that are temporarily not receiving fresh food.

A high fiber content promotes healthy digestion, and it includes a carefully balanced herbal blend to support digestion and stimulate appetite.

## Composition:

Alpine grass meal 30%, soybean hulls 25%, linseed cake, oat bran 10%, wheat germ, fennel seed 1.5%, rapeseed oil, mint 1%, caraway seed 1%, pectin 1%, sodium chloride, fenugreek seed 0.5%, licorice root 0.5%, turmeric 0.5%, calamus root 0.5%, dried chamomile flowers 0.5%, fructo-oligosaccharides 0.25%

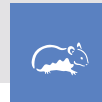
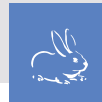
## Analytical Constituents:

Crude ash	6,9 %	Crude protein	16 %
Crude fat	4,8 %	Crude fibre	22 %
Calcium	0,5 %		

## Additives per kg:

### Nutritional additives:

Vitamin A	11.400 I.U.	
Vitamin D <sub>3</sub>	760 I.U.	
Vitamin E	38	
mg		
Vitamin C	9.510 mg	
Vitamin K <sub>3</sub>	1,9 mg	
Vitamin B <sub>1</sub>	1,4 mg	
Vitamin B <sub>2</sub>	3,8 mg	
Vitamin B <sub>6</sub> / Pyridoxine hydrochloride	3,8 mg	
Vitamin B <sub>12</sub> / Cyanocobalamin	28,5 µg	
Niacin	19 mg	
Calcium-D-Pantothenate	12,8 mg	
Choline chloride	285 mg	
Iron (as ferrous sulfate monohydrate)	47,5 mg	
Manganese (as manganese oxide)	38 mg	
Zinc (as zinc oxide)	57 mg	
Copper (as copper(II) sulfate pentahydrate)	11,9 mg	
Iodine (as calcium iodate, anhydrous)	0,9 mg	
Selenium (as sodium selenite)	0,2 mg	
Cobalt (as coated cobalt(II) carbonate granulate)	0,4 mg	



**Mix the powder with warm water at approximately a 1:2 ratio (1 part powder to 2 parts water) until a creamy mash is formed. Depending on the animal's needs, a slightly thinner or thicker mash can be prepared.**

**Unless otherwise directed by your veterinarian, animals should receive at least 60–80 ml of prepared mash per kg of body weight per day, divided into 5 to 6 meals.**

**Very weak animals should be fed small portions as frequently as possible (every 2–3 hours).**

Depending on the animal's species, weight, age, and condition, the required feeding amount and frequency may vary and should be discussed with a veterinarian.

Offer the mash in a bowl or on a small spoon. If the animal does not eat voluntarily, RodiCare® instant can be gently administered in small amounts using a syringe placed at the side of the mouth.

During the transition from liquid to solid food, RodiCare® instant can be shaped into small dough-like lumps using a small amount of water. Once the animal begins eating solid food again, the RodiCare® instant portion should be reduced accordingly.

Store the mash in a cool place and use within 12 hours. Do not feed the mash cold.

#### Notes:

High-quality hay and fresh water should always be freely available.

Since full recovery of the digestive tract may take several weeks, it is recommended to feed RodiCare® basic pellets during and after the transition to solid food.

Store in a dry place below 25 °C!